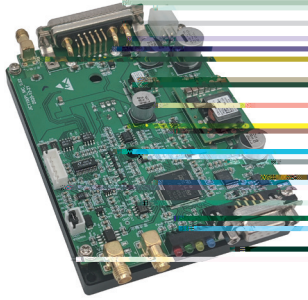




MCA-R

1.5ns



MCA RealSubns®

Q

便

OEM

1064nm&532nm 1064nm&355nm

1.5ns

200 J

2.5kHz

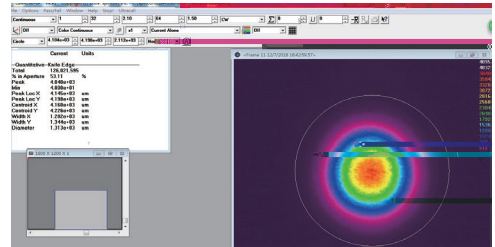
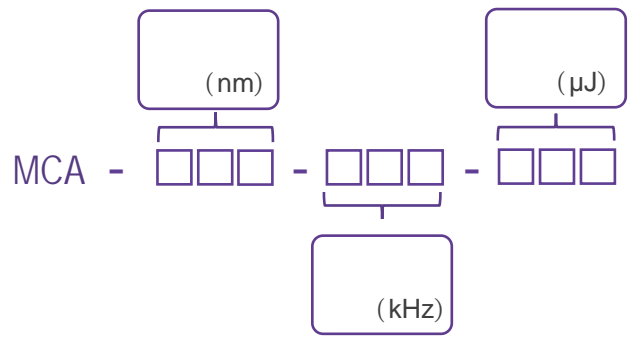
TEM₀₀

光学参数

(nm)	1064			532		
(kHz)	1*	2.5	2.5*	1*	2.5	2.5*
(mW)	200	300	500	100	150	250
(μJ)	200	110	180	100	55	90
(ps)	2000			1500		
(8h)	±3%					
TEM ₀₀						
Typ.(mrad)	@1/e ²	3			2.5	
	@1/e ²	3			2.5	
>100:1						
100-240 VAC 50/60 Hz						
RS232 USB						
(W)	20	20	25	20	25	25
(W×H×L,mm)	90×32.6×120					
(W×H×L,mm)	45×30×120					
()	15~35					
()	0~60					

1. * ()
 <20kHz >20kHz TTL 5V SMA

2



mm



()

()